



Snow Lizard

POWER TO OUTLIVE YOUR ADVENTURE

SLPOWER 9X | SLPWRDC9X

SLPOWER9X

UNIVERSAL CHARGER

SLPower 9X is designed for the power-hungry lifestyle. It has a IP-67 rating coupled with a Military rating of 810G making it the ultimate in universal portable chargers: Shockproof, Dustproof, and Waterproof up to 1 meter [3.3ft]. This battery will power your way through torrential downpours, extreme hikes, or even a quick swim. Stay powered wherever you go, wherever you are.

MEETS U.S. MILITARY STANDARDS

DROPPROOF 810G UP TO 2M/6.6FT	WATERPROOF IP-67 UP TO 1M/3.3FT
---------------------------------------------------	-----------------------------------------------------



black/grey



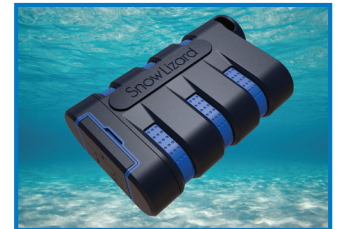
black/blue *



charges any USB-powered device






lanyard or carabiner hook



Rated IP-67: waterproof in depths up to 1m/3.3ft

PRODUCT

FEATURES / PACKAGING

Universal	universal charger for most USB powered devices: mobile phones, tablets, etc.
Waterproof	rated IP67 to be waterproof in depths up to 1 meters/3.3 feet
Rugged	MIL SPEC 810G drop-proof up to 2 meters/6.6 feet, shockproof, and dustproof
Portable Battery	9000mAh portable, rapid charge battery
estimated time increases*	<div style="display: flex; justify-content: space-around; align-items: center;"> <div style="text-align: center;">  +68HR TALK </div> <div style="text-align: center;">  +270HR PLAYBACK </div> <div style="text-align: center;">  +18HR VIDEO </div> </div>

*results based on 1432 mAh battery phone, extended times vary by usage

PACKAGING



SPECS

product dimensions	4.02" x 2.56" x 1.06" (101 x 65 x 27 mm)
product weight	7.7 oz (218 g)
battery capacity	9000mAh
USB output/input	5V/2.1A (out), 5V/2A (in)
package dimensions	7.00" x 4.06" x 2.11" (178 x 103 x 53.5 mm)
package weight	12 oz (340 g)

CONTENTS

- SLPower9X*
- Micro USB cable
- User guide

*product color offerings and appearance subject to change

PRODUCT NO.

- SLPWRDC9X-BLK** 856926003522
- SLPWRDC9X-BLU** 856926003546